

Edmark Reading Program

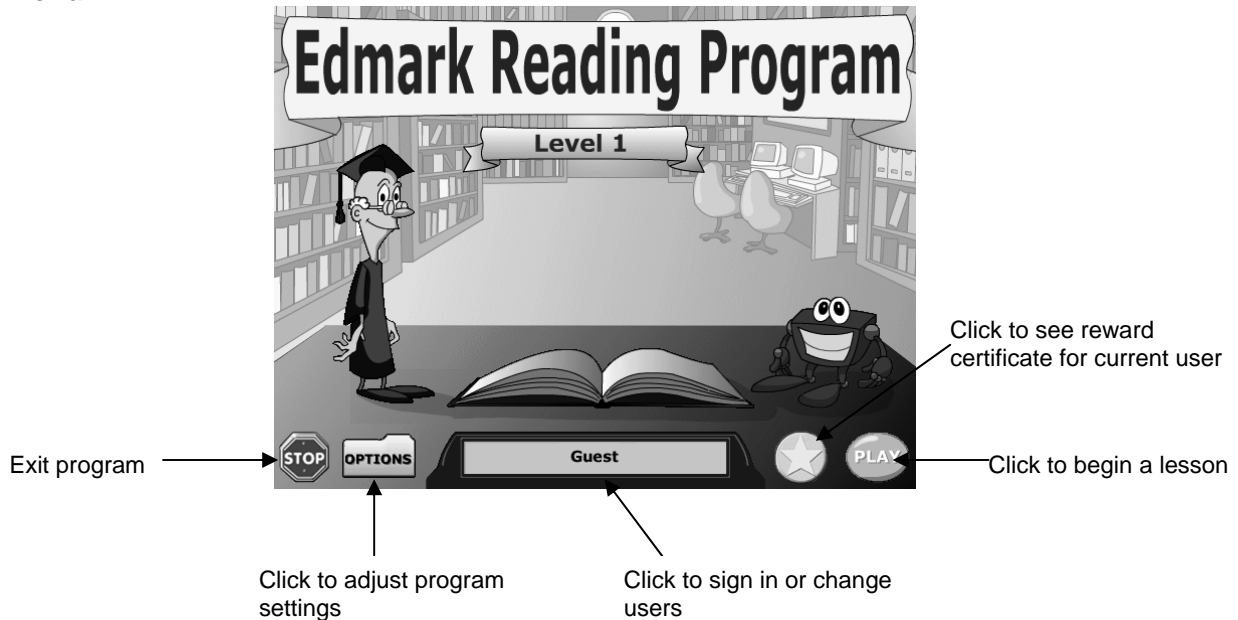


Using a whole-word approach, the *Edmark Reading Program* teaches recognition and comprehension of 350 commonly used words. The *Edmark Reading Program* offers lessons in Pre-Reading, Word Recognition, Direction Cards, Picture/Phrase Cards, Stories, Reviews, and Tests. The program provides intrinsic motivation through small steps, helping to ensure that even the most challenged readers achieve over 90 percent correct answers.

The *Edmark Reading Program* has proven effective with a wide array of students who had not previously succeeded in learning to read: preschool students (aged three through five years); elementary students having difficulty with traditional classroom reading materials; adults with severe learning or cognitive disabilities; young children with hearing impairments; beginning English as a Second Language (ESL) students; and most students with special needs.

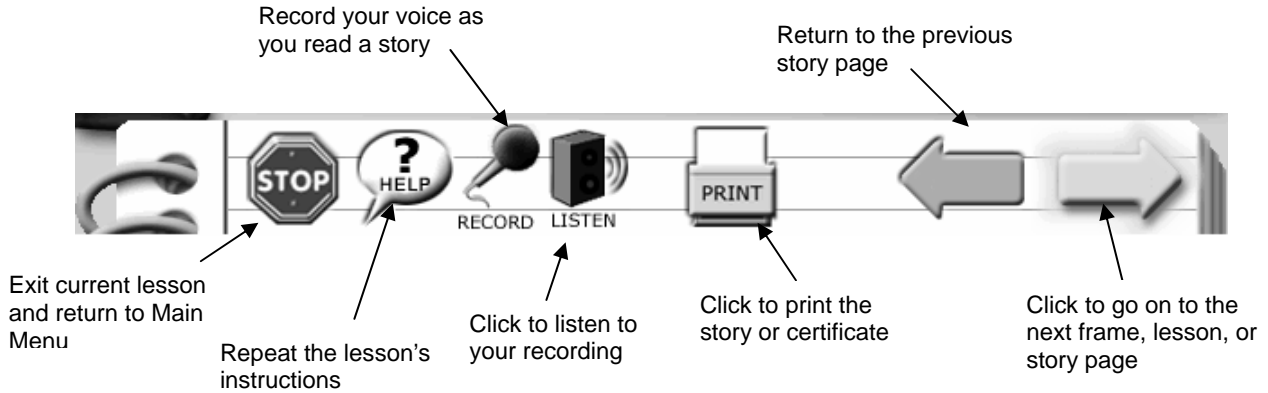
The simple, straightforward interface of the *Edmark Reading Program* allows students to use a variety of input devices to interact with the program. The *Edmark Reading Program* also includes convenient administrative features that help you customize the program to suit students' needs, and keep track of students' progress in the lessons.

Main Menu



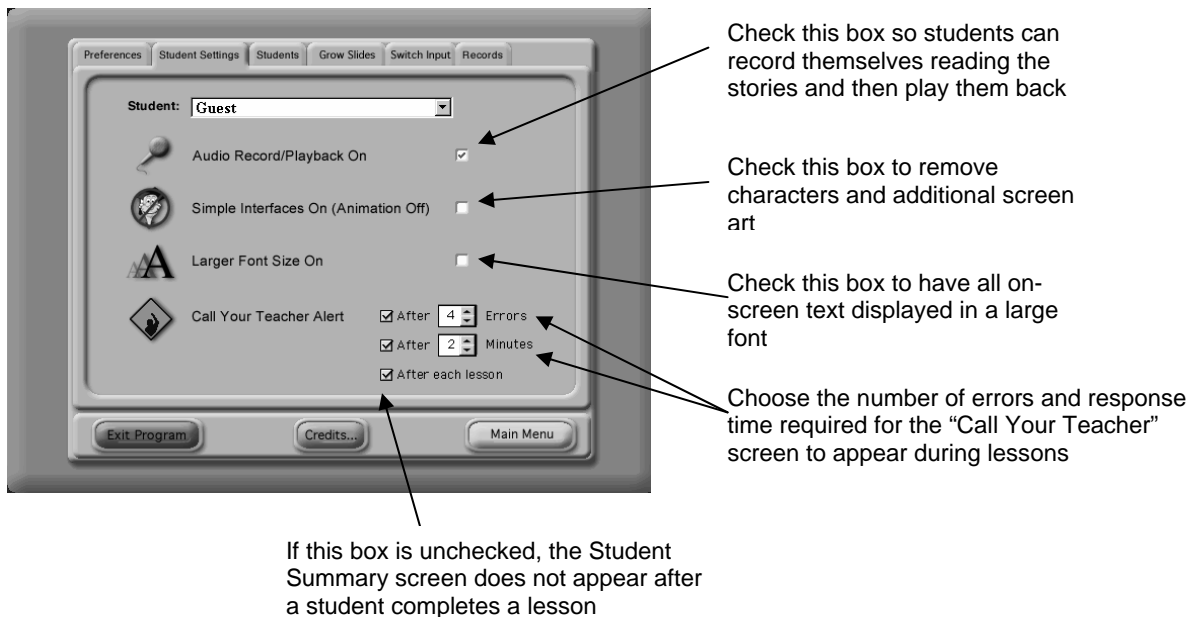
Tool Bar

All lessons in the *Edmark Reading Program* feature a Toolbar along the bottom of the screen. Use the buttons to move through the lesson and choose program options.



Student Settings

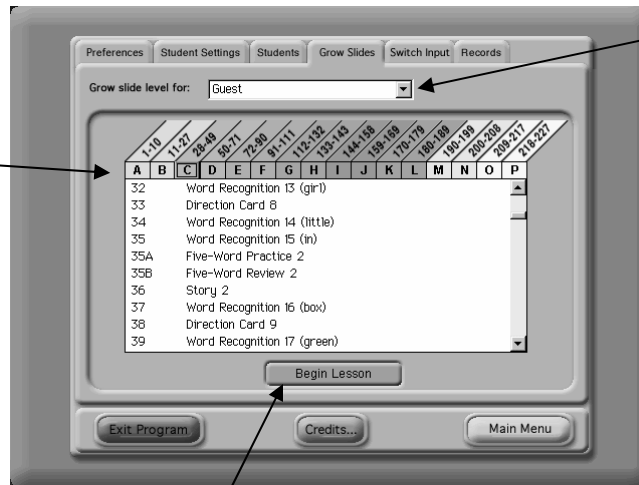
Click the Student Settings tab to view or change the program settings for an individual student.



Grow Slide

Click the Grow Slide tab to review a student's progress in the lessons, or to manually move a student to a different lesson.

Click a letter to view a group of lessons in the Grow Slide



Grow Slide settings for this student is shown. You can select a different student from the pull-down menu.

Click to go directly to the selected lesson

Single Switch Input

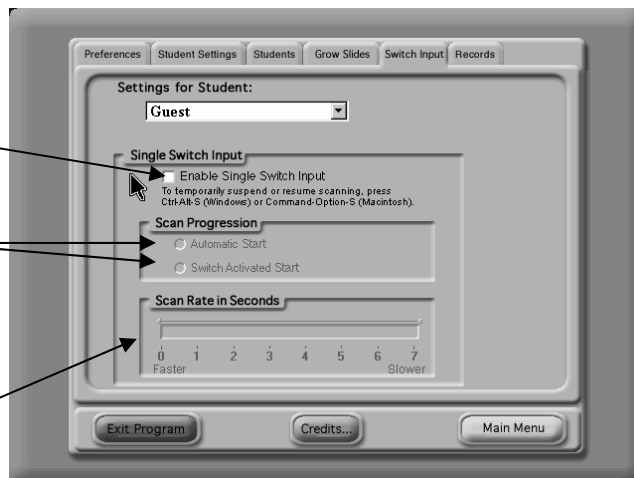
Click the Switch Input tab if you want to turn single switch scanning on and off, or to set scanning options.

When single switch scanning is turned on, a selection arrow advances from choice to choice on-screen. Students can select a highlighted item by activating a single switch device.

Check here to turn scanning on or off

Click here to have scanning restart automatically after each selection or have the student activate the switch to restart scanning

Select the scanning rate (in seconds): 1 (fastest) to 7 (slowest)



To temporarily suspend or resume scanning while a student is using the program, press CTRL-ALT-S.

Simple Interface vs. Standard Interface

Simple interface may be preferable for students who are easily distracted or who have difficulty with visual discrimination. Professor Seymour words and the AlphaBeta 900 WordBot are colorful animated characters that encourage and reward students as they complete lessons. These characters offer additional motivation to many students, but may be a distraction to some. Removing the animated characters and additional screen art may help these students concentrate on the lessons.



Simple Interface



Standard Interface

Reward Certificates

As students successfully complete tests in the program, stars are added to their reward certificates.

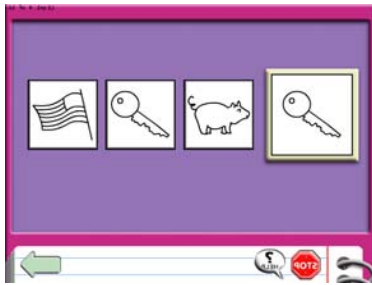
Each star on the certificate represents a successfully completed 10-word post-test

The current date appears on each certificate

Place for teacher signature

5 Types of Lessons

Pre-Reading (Level 1 Only)



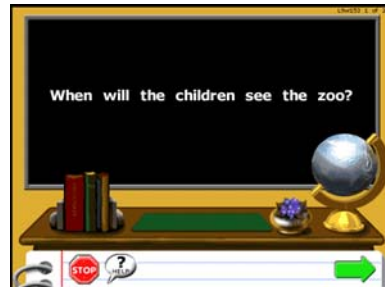
In the Pre-Reading lessons, students increase basic matching and discrimination skills and practice top-to-bottom and left-to-right reading patterns. Recognizing matching shapes helps students identify letters and words in later lessons. As students complete the simple matching exercises in the Pre-Reading lessons, they also practice following verbal instructions and making selections.

Word Recognition (Levels 1 & 2)

Word Recognition lessons teach a total of 150 words. Words are presented one at a time. The first time a new word is introduced in a lesson, it is shown with dashes as the distracters. In later lessons, the distracters include nonsense words, and eventually real words. Students practice pairing spoken and printed words until they can respond automatically and correctly to printed words. After 10 new words are introduced, a post-test is given.



Level 1



Level 2

Direction Cards (Level 1 Only)

Level 1



In the 39 Direction Card lessons, students reinforce word meanings by matching brightly illustrated pictures to highlighted words or phrases. For example, students match pictures of "girl" and "boy" to the corresponding words. Students also learn that the same word--for example, "horse"--can be matched with pictures of different horses.

Some Direction Card lessons include two steps. In these lessons, students must first find a picture to match each word or phrase (for example, "a yellow ball" and "a box"). Then they must place one object **in**, **on**, or **under** another, as described in the sentence they are reading. (For example, "Put a yellow ball **in** a box.")

Picture/Phrase Cards (Levels 1 & 2)

In the 39 Picture/Phrase Cards, students choose words, phrases, or sentences to describe illustrations of objects, situations, or events. The lessons become progressively more difficult, requiring students to discriminate between similar pictures and phrases. As students complete the Picture/Phrase Card lessons, they gain functional reading experience, broadening their comprehension and expanding their language development.



Level 1



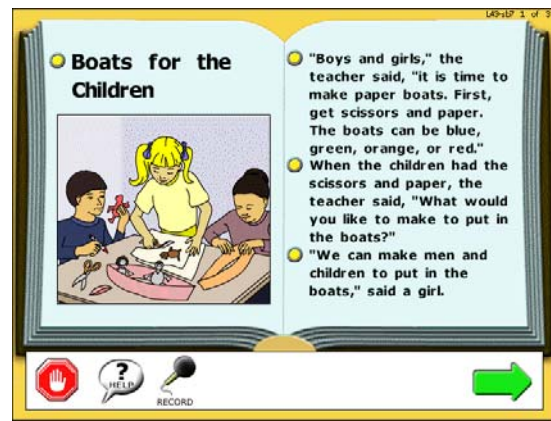
Level 2

Stories (Levels 1 & 2)

All stories in the program are colorfully illustrated. Only learned words are used in the stories, allowing students to review and practice their reading vocabulary. Reading the stories acts as a bridge between the program lessons and everyday reading. Students can page back and forth through each story to read it as many times as they like. Students can click a word to hear it read aloud, or click the yellow dot to hear an entire sentence read aloud. Students can also record themselves reading the stories aloud and then play back their own recordings!



Level 1



Level 2